



for healing the body naturally!

New Hair, patch is a **NON-DRUG** product that was developed as a complementary therapy program that is accepted by Doctors and Practitioners to provide additional energetic support for hormone deficiencies.

Made in the U.S.A.



Instructions:

Place the New Hair patch on the upper left side of your shoulder.

According to ancient theories, energy travels through the body far better on the left side. **Replace the patch every 3 days with a new one.**

The patch is made for all skin types, for best results, clean off the area before placing the patch on your skin. The "New Hair" patch is a non-drug product that is designed to energetically help with hormone deficiencies and restore lost enzymes and to reverse imbalances and start growing new hair.

The New Hair patch has been programmed with the same natural frequencies of a healthy living papilla, which is a large structure at the base of the hair follicle. This patch will not have any harmful side effects, because there are no chemical reactions taking place. Just pure energy is released into your body to strengthen the hair follicle, thus restoring needed enzymes to assist healthy growth mechanisms. The human body is a functioning living entity and at rest can be measured and photographed by heat sensitive equipment, and is therefore receptive to the same bio frequencies that emits from the 'infused New Hair patch'. The patch is also waterproof and can be worn while you bathe or shower.

This patch have been tested extensively and proven by the many that has experienced them to promote improved hair growth.

New Hair™



Women over 40 lose hair for a variety of reasons, ranging from genetics to hormone imbalances, stress and diet. Before treating hair loss, or alopecia, doctors at the Mayo Clinic recommend that women get a medical exam to determine the cause. Sudden hair loss in patches can be a sign of a serious medical condition.

Female-pattern baldness, or androgenetic alopecia, is the most common form of hair loss in women over 40 and affects nearly one-third of the population. This condition is passed down through generations and usually can be predicted by looking at older relatives.

Women over 40 who have experienced a traumatic event such as childbirth or surgery may get what's called telogen effluvium, a hair loss disorder that can become chronic and last for years. Many women begin to lose hair when they undergo a long period of emotional stress that sets their hormones out of balance even more.

The New Hair Protocol

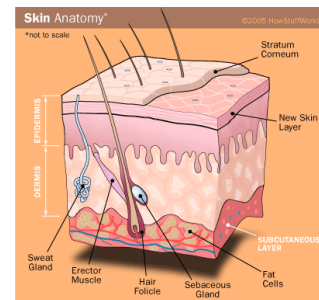
In combination with immersing the patient with bioenergy frequencies from the patches and the power energy bracelet for at least (12) months, and committing to a change of diet, the patient will see amazing results. A total commitment is necessary to complete the protocol to grow new stronger and healthier hair.

If needed, continue with procedure for an additional 120 days.

Energetic Protocol and Products

The **“New Hair” patch** is a small one inch skin patch that has been programmed with the same natural frequencies of a healthy living papilla, which is a large structure at the base of the hair follicle. The substrate material is an eco-friendly vinyl with 22.8% metalized elements that has the same properties as a crystal-oscillator (as used in radios). The substrate material is then bonded to a non-allergic, non-latex 3M Band-Aid adhesive tape that’s FDA approved for skin usage, which is water proof and will stick on your skin for three days. The protocol is to wear the New Hair for (3) months then alter it with the Growth Hormone patch, (GH) for three months. Wear the patch for (3) days and replace it with a new patch.

The **“GH Balance” patch** is another patch to be worn after the first three months. The active frequency in this patch is HGH human growth hormone and is needed for the action of DHT (di-hydro-testosterone), a by-product of testosterone, which attacks and destroys the hair follicles. The protocol is to alter each patch every three months. This protocol is made for **[one year]** to correct the hormone imbalances that is a common problem among men and women. The finding suggested that almost 38% of the participants reported improvement in the texture and color of the hair. New hair growth was also recorded. Dietary modifications: consume a diet rich in Vitamin C and Vitamin E, since, they act as strong antioxidants, and remove oxygen free radicals, which tend to cause cellular damage.



The **“Quantum Energy” bracelet** is an attractive stainless steel bracelet to be worn on your left wrist, 24-7. It’s made of a soft eco-friendly silicone material and 316L stainless steel hardware with (5 in 1) Embedded Energy Elements: Far Infrared Ray, Negative ion, Neodymium magnet, Germanium and Tourmaline. These Earth elements are vital for complete health and wellness and have been known to reverse fear, increase confidence and raise awareness and overall improve stamina. It has also been charged with same frequencies as the New Hair patch, giving the patient a complete submerged treatment of energy that is conducive to growth hair.

And a list of Hair (10) Growing foods will be provided. Just like every other part of your body, the cells and processes that support strong, vibrant hair depend on a balanced diet. We strongly suggest that foods that are rich in iron should be added to your client’s diet. The nutrients you eat today will help fortify the hair follicle for rich strong hair.