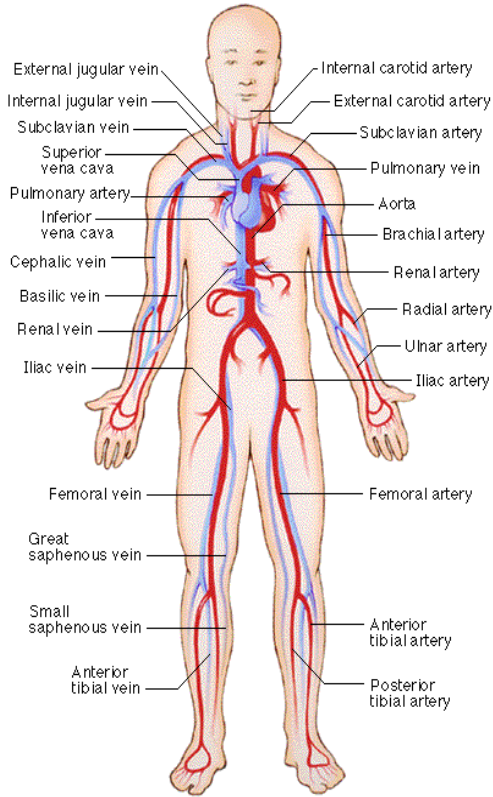




for healing the body naturally!

The Circulation™ patch is a **NON DRUG** patch that was developed as a complementary therapy program that is accepted by Doctors and Practitioners as an aid to support the body's circulation system.

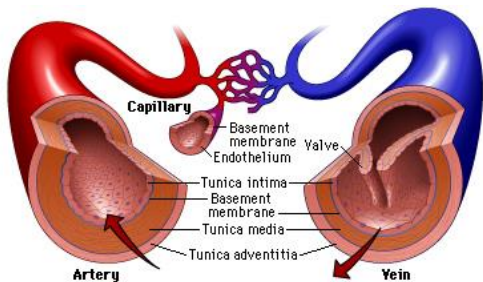


Circulation patch helps in restoring optimal functions of the circulation system. The circulatory system is a vast network of organs and vessels that is responsible for the flow of blood, nutrients, oxygen and other gases, and hormones to and from cells. Without the circulatory system, the body would not be able to fight disease or maintain a stable internal environment — such as proper temperature and pH balance — known as homeostasis. While many view the circulatory system as simply a highway for blood — it is also known as the cardiovascular system — it is made up of three independent systems that work together: the heart (cardiovascular), lungs (pulmonary) and arteries, veins, coronary and portal vessels (systemic).

In the average human, about 2,000 gallons (7,572 liters) of blood travel daily through about 60,000 miles (96,560 kilometers) of blood vessels. An average adult has 5 to 6 quarts (4.7 to 5.6 liters) of blood, which is made up of plasma, red blood cells, white blood cells and platelets.

In addition to blood, the circulatory system moves lymph, which is a clear fluid that helps rid the body of unwanted material.

The **Circulation patch** works with the body's energetic system to carry oxygen and nutrients to and waste materials away from all body tissues.



Proper Placement

Place the Circulation patch on the left shoulder. Your body accepts energy far better than the right side. Please follow directions that are stated below for best results.

Circulation™

Instructions: The Circulation patch is to be applied to your body, (left shoulder).

It was developed to support the circulation system. Made to last for 3 days, then discard.

Apply another patch and wear it for additional 3 days.

Repeat this procedure for 30 days to restore optimal circulatory function.

If needed, continue with procedure for an additional 60 days.