



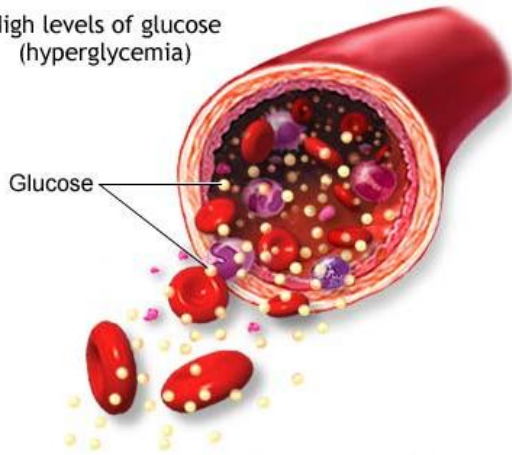
Blood Sugar™

for healing the body naturally!

The Blood Sugar™ patch is a **non-drug** product that was developed as a complementary therapy program that is accepted by Doctors and Practitioners as an aid to support liver function in blood sugar abnormalities.

Made in the U.S.A.

High levels of glucose
(hyperglycemia)



Note:

Individuals with type 2 diabetes have a higher incidence of liver function test abnormalities than individuals who do not have diabetes. Mild chronic elevations of transaminases often reflect underlying insulin resistance.

Proper Placement

Place the Blood Sugar patch on the left shoulder; the body accepts energy far better than the right side. Please follow directions that are stated below for best results.

Blood Sugar: this patch has been recently upgraded with the frequencies of Berberine HCl for its natural antibiotic function. These frequencies assist in the nutritional up-take for pancreatic and liver function in blood sugar abnormalities. Berberine is a chemical found in several plants including European barberry, goldenseal, goldthread, Oregon grape, philodendron, and tree turmeric.

The blood sugar concentration or blood glucose level is the amount of glucose (sugar) present in the blood of a human or animal. The body naturally tightly regulates blood glucose levels as a part of metabolic homeostasis.

With some exceptions, glucose is the primary source of energy for the body's cells, and blood lipids (in the form of fats and oils) are primarily a compact energy store. Glucose is transported from the intestines or liver to body cells via the bloodstream, and is made available for cell absorption via the hormone insulin, produced by the body primarily in the pancreas.

Glucose levels are usually lowest in the morning, before the first meal of the day (termed "the fasting level"), and rise after meals for an hour or two. Blood sugar levels outside the normal range may be an indicator of a medical condition.

Blood Sugar™

Instructions: The Blood Sugar patch is to be applied to your body, (left shoulder).

It was developed to support the body's ability to improve natural antibiotic function.

Made to last for 3 days, then discard. Apply another app and wear it for additional 3 days to improve liver function. Repeat this procedure for 30 days to regulate Glucose levels.

If needed, continue with procedure for an additional 60 days.

